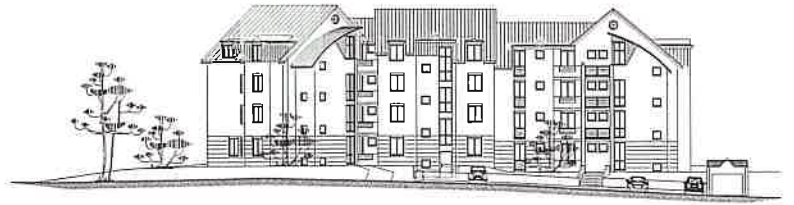


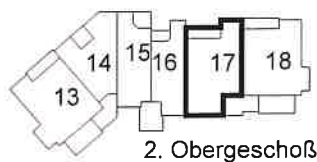
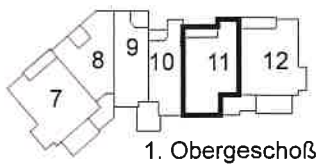
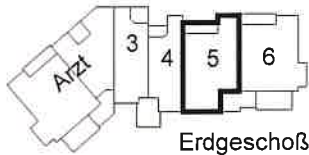
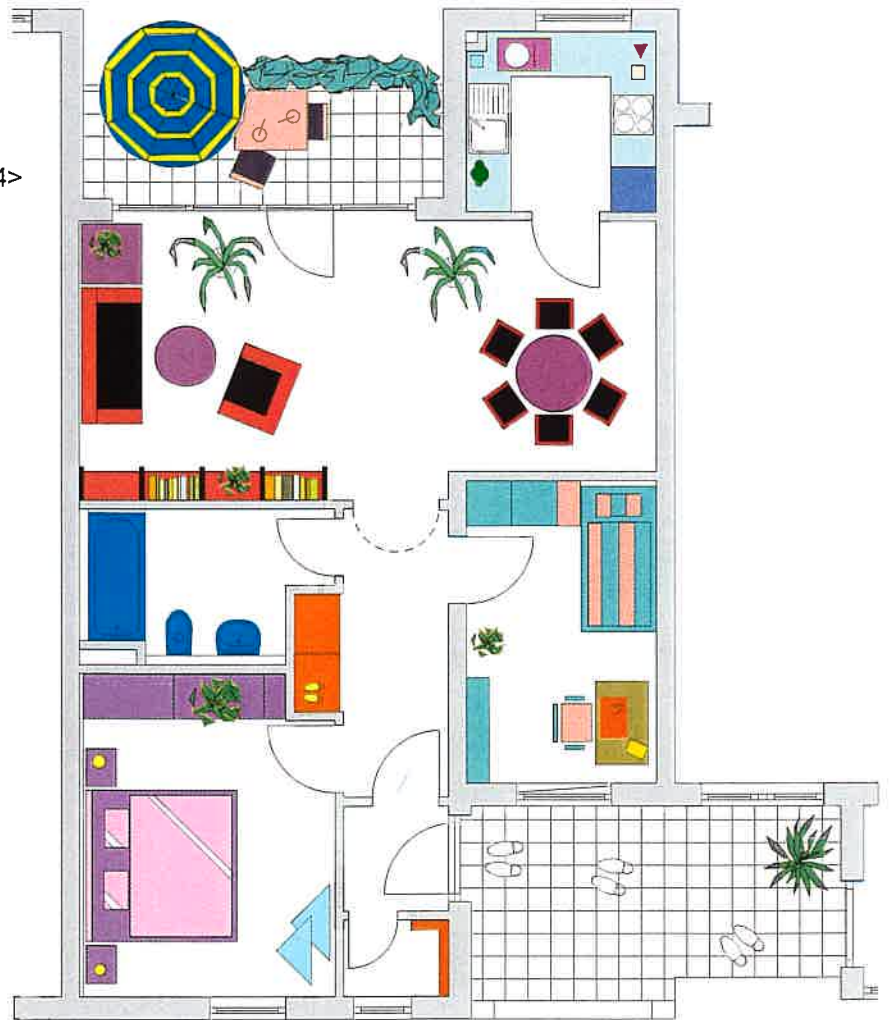
Whg. Nr. 5 Erdgeschoß  
 Whg. Nr. 11 1.Obergeschoß  
 Whg. Nr. 17 2.Obergeschoß



Ansicht von Osten (Wohnweg)

| 3-Zi.         | Wfl./qm      |
|---------------|--------------|
| Wohnen/Essen  | 27,59        |
| Schlafen      | 13,68        |
| Kind          | 9,94         |
| Kochen        | 5,82         |
| Diele         | 6,19         |
| Windfang      | 1,86         |
| Bad/WC        | 5,80         |
| Abstellr.     | 1,35         |
| Balkon        | 3,57         |
| <b>Gesamt</b> | <b>75,80</b> |

<7,14>



Maßstab 1:100

Die Möblierung der Wohnungen sind nur Einrichtungsbeispiele